

# Noble County: Children Services Profile

June 2023

## County Demographics 2022

<b>Population</b>		14,216
Race	White	94%
	African American	4%
	Multiracial	1%
	Other	1%
Ethnicity (% Hispanic)		1%
<b>Child Population</b>		2,673
<b>Per Capita Income</b>		\$28,676
<b>Poverty Rate</b>	All Ages	17%
	Children	21%
<b>Grandparents Raising Grandchildren</b>		32

## Agency Response SFY 2023

<b>Reports Screened-In by Agency</b>		91
<b>By Type</b>	Physical Abuse	34%
	Neglect	14%
	Sexual Abuse	16%
	Emotional Maltreatment	0%
	Multiple Allegations	22%
	Family in Need of Services, Dependency, Other	13%
<b>By Category</b>	Abuse or Neglect (Traditional Response)	41%
	Abuse or Neglect (Alternative Response)	46%
	Dependency	0%
	Family in Need of Services	13%
<b>Cases Transferred to Ongoing</b>		13

<b>Children in Custody</b>	<b>SFY 2022</b>	<b>SFY 2023</b>	<b>Change</b>
Total in custody anytime during year	9	10	11%
Rate per 1,000 children	3.4	3.7	11%

## Permanency

<b>Children who gained permanency through</b>	<b>SFY 2022</b>	<b>SFY 2023</b>	<b>Change</b>
Reunification	0	1	-
Guardianship	0	0	-
Custody to Relative	1	2	100%
Adoption	2	3	50%
<b>Children waiting to be adopted</b>	2	0	-100%

## Youth Aged Out of Care

	<b>SFY 2022</b>	<b>SFY 2023</b>	<b>Change</b>
Number Aged Out	1	0	-100%

## Children Served

	On 7/1/2022		On 7/1/2023	
Total	32		27	
In Custody	5	16%	4	15%
In Home	27	84%	23	85%

## Profile of Children in Custody on 7/1/2023

### Gender

Female	50%
Male	50%

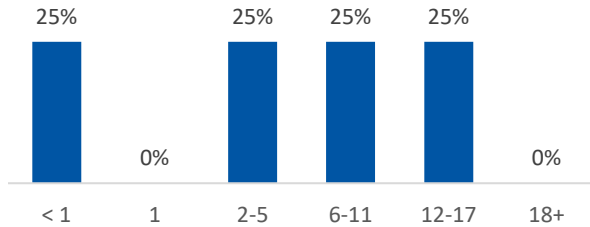
### Race

White	100%
African American	0%
Multiracial	0%
Other	0%

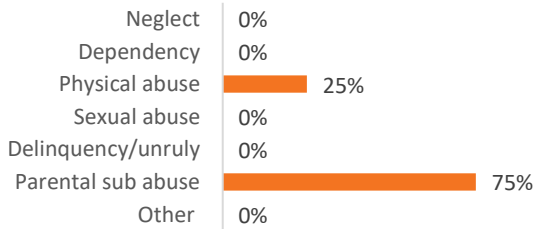
### Ethnicity (% Hispanic)

0%

### Age in Years



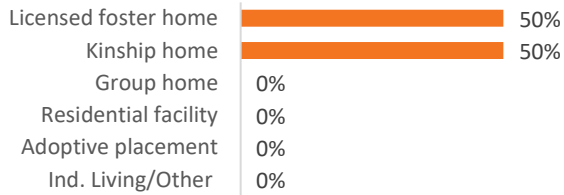
### Primary Reason for Removal



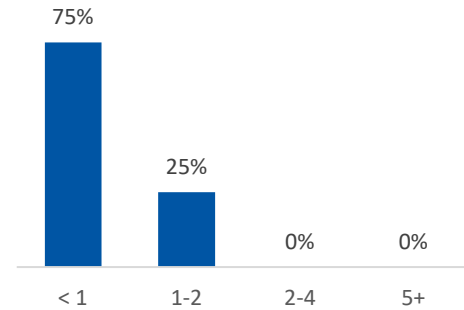
### Type of Custody

Temporary	100%
Permanent	0%
Planned Permanent Living Arrangement	0%

### Placement Type



### Years in Custody



## Profile of Children in Home on 7/1/2023

### Gender

Female	35%
Male	65%

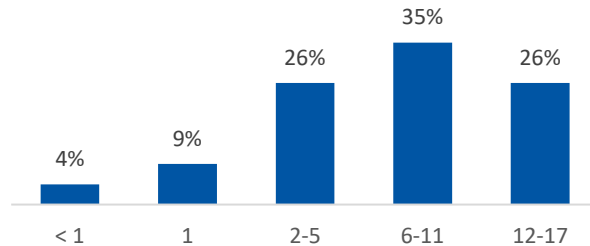
### Race

White	91%
African American	0%
Multiracial	9%
Other	0%

### Ethnicity (% Hispanic)

0%

### Age in Years



### Contact Information

Noble County Job & Family Services, 46049 Marietta Road,  
Caldwell, OH 43724, (740) 732-2392

For data sources and notes, go to  
<https://www.pcsao.org/pdf/factbook/2023/Sources.pdf>