

# Clermont County: Children Services Profile

June 2023

## County Demographics 2022

<b>Population</b>	208,851	
Race	White	93%
	African American	1%
	Multi-racial	4%
	Other	2%
Ethnicity (% Hispanic)	2%	
<b>Child Population</b>	46,991	
<b>Per Capita Income</b>	\$41,566	
<b>Poverty Rate</b>	All Ages	8%
	Children	9%
<b>Grandparents Raising Grandchildren</b>	2,137	

## Agency Response SFY 2023

<b>Reports Screened-In by Agency</b>	1,146	
<b>By Type</b>	Physical Abuse	35%
	Neglect	30%
	Sexual Abuse	10%
	Emotional Maltreatment	1%
	Multiple Allegations	15%
	Family in Need of Services, Dependency, Other	8%
<b>By Category</b>	Abuse or Neglect (Traditional Response)	33%
	Abuse or Neglect (Alternative Response)	60%
	Dependency	3%
	Family in Need of Services	5%
<b>Cases Transferred to Ongoing</b>	142	

<b>Children in Custody</b>	<b>SFY 2022</b>	<b>SFY 2023</b>	<b>Change</b>
Total in custody anytime during year	265	268	1%
Rate per 1,000 children	5.6	5.7	1%

## Permanency

<b>Children who gained permanency through</b>	<b>SFY 2022</b>	<b>SFY 2023</b>	<b>Change</b>
Reunification	37	49	32%
Guardianship	0	2	-
Custody to Relative	24	18	-25%
Adoption	21	10	-52%
<b>Children waiting to be adopted</b>	35	50	43%

## Youth Aged Out of Care

	<b>SFY 2022</b>	<b>SFY 2023</b>	<b>Change</b>
Number Aged Out	13	14	8%

## Children Served

	On 7/1/2022		On 7/1/2023	
Total	344		344	
In Custody	173	50%	180	52%
In Home	171	50%	164	48%

## Profile of Children in Custody on 7/1/2023

### Gender

Female	52%
Male	48%

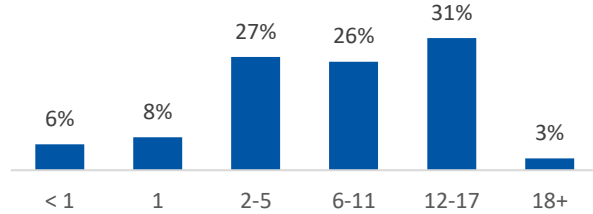
### Race

White	67%
African American	2%
Multiracial	31%
Other	0%

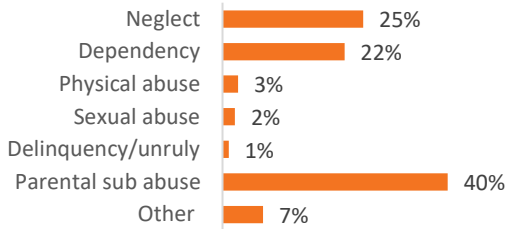
### Ethnicity (% Hispanic)

3%

### Age in Years



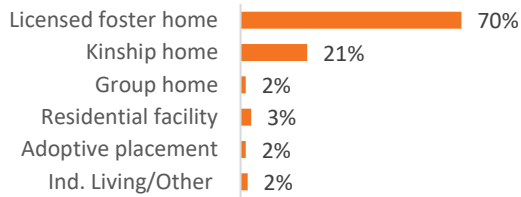
### Primary Reason for Removal



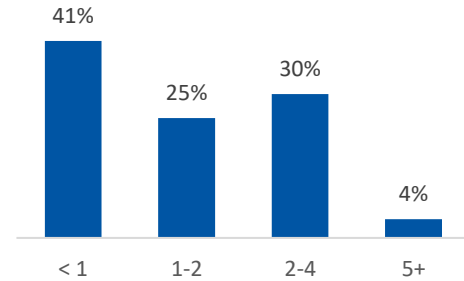
### Type of Custody

Temporary	61%
Permanent	39%
Planned Permanent Living Arrangement	0%

### Placement Type



### Years in Custody



## Profile of Children in Home on 7/1/2023

### Gender

Female	55%
Male	45%

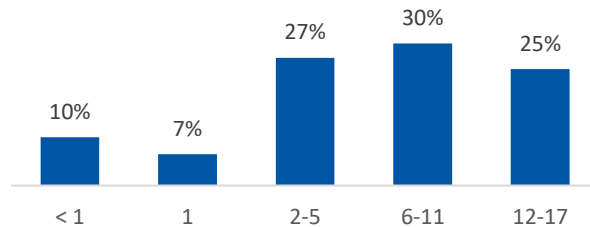
### Race

White	88%
African American	4%
Multiracial	7%
Other	0%

### Ethnicity (% Hispanic)

3%

### Age in Years



### Contact Information

Clermont County Job & Family Services, 2400 Clermont Center Drive, Batavia, OH 45103, (513) 732-7173

For data sources and notes, go to <https://www.pcsao.org/pdf/factbook/2023/Sources.pdf>